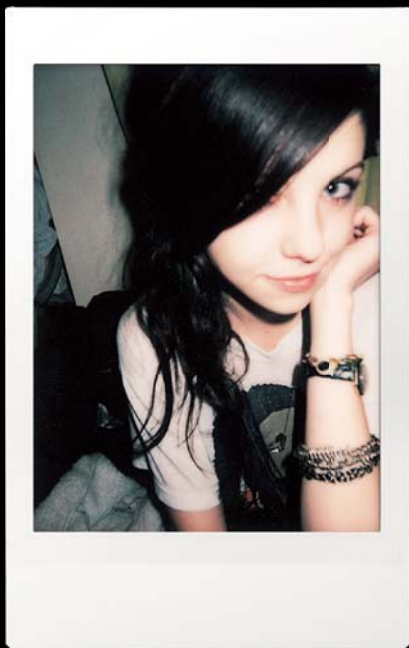


FUJIFILM

Instant
Camera



Catch the Glamour of the Moment.

instax mini 50S
PIANO BLACK



http://www.fujifilm.com/instax_mini_50s/



Instant Camera



Orange lamp will appear when Self Timer is activated.

Self-Timer mode allows you to create two photos with the single press of the shutter. Enjoy instant photos with friends or that special person in your life.



The high-performance Flash mode automatically calculates surrounding brightness and adjusts shutter speed accordingly — excellent for photos at parties with subdued lighting and other low light scenes.



The Close-up Lens allows you to shoot from a distance up to 30 cm away so you can take great photos of beautifully arranged and colorful party food, cakes, etc.

A compact and stylish piano-black body makes the perfect companion to those sophisticated parties. Capture the mood in the beautiful photo prints instantly!

instax mini 50S

PIANO BLACK



instax mini50S Specifications

Film	Fujifilm Instant Color Film "instax mini"
Picture size	62 x 46mm
Lens	Move in/out type Lens, 2 components, 2 elements, f=60mm, 1:12.7
Viewfinder	Real image finder, 0.37x, with target spot
Focusing	Motor-driven 2-range switching: 0.6 - 3m/3m - ∞, Shooting range: 0.6m - ∞, Landscape Mode (3m - ∞)
Shutter Release	Programmed electronic shutter release, 1/3 - 1/400 sec. shutter speeds, 2 shutter release buttons (vertical shooting/horizontal shooting)
Exposure control	Automatic, Interlocking range (ISO 800): LV5.0 - LV15.5, Exposure compensation (Lighten-Darken Control): ± 2/3EV
Film Feeding Out	Automatic
Flash	Built-in, Automatic electronic flash, Auto mode (Intelligent Flash for Brighter Backgrounds), Fill-in Flash Mode, 0.2 - 5sec. recycle time (when new batteries are used), with flashcharging lamp (red), effective flash lamp range: 0.6 - 3 m
Self-timer	Electronically controlled, approx. 10 second delay, Continuous shooting mode, can be stopped mid-run
Liquid Crystal Display (LCD)	Exposure counter (number of unexposed films), Landscape Mode, lighten-darken control, Fill-in Flash Mode, Self-timer Mode (1 frame/2 frames continuous shooting)
Power Supply	Two CR2/DL CR2 lithium batteries, Capacity: 30 film packs (Based on our test conditions)
Others	With film pack confirmation window, tripod socket, stylish illumination indicators
Dimensions & Weight	112.0 x 96.5 x 49.5 mm/275g (without batteries, strap and film pack)

*Specifications are subject to change without notice.

INSTANT COLOR FILM

instax mini

10 sheets per pack

Fujifilm Instant Color Film "instax mini" Write your own personal message directly below the photo image.

